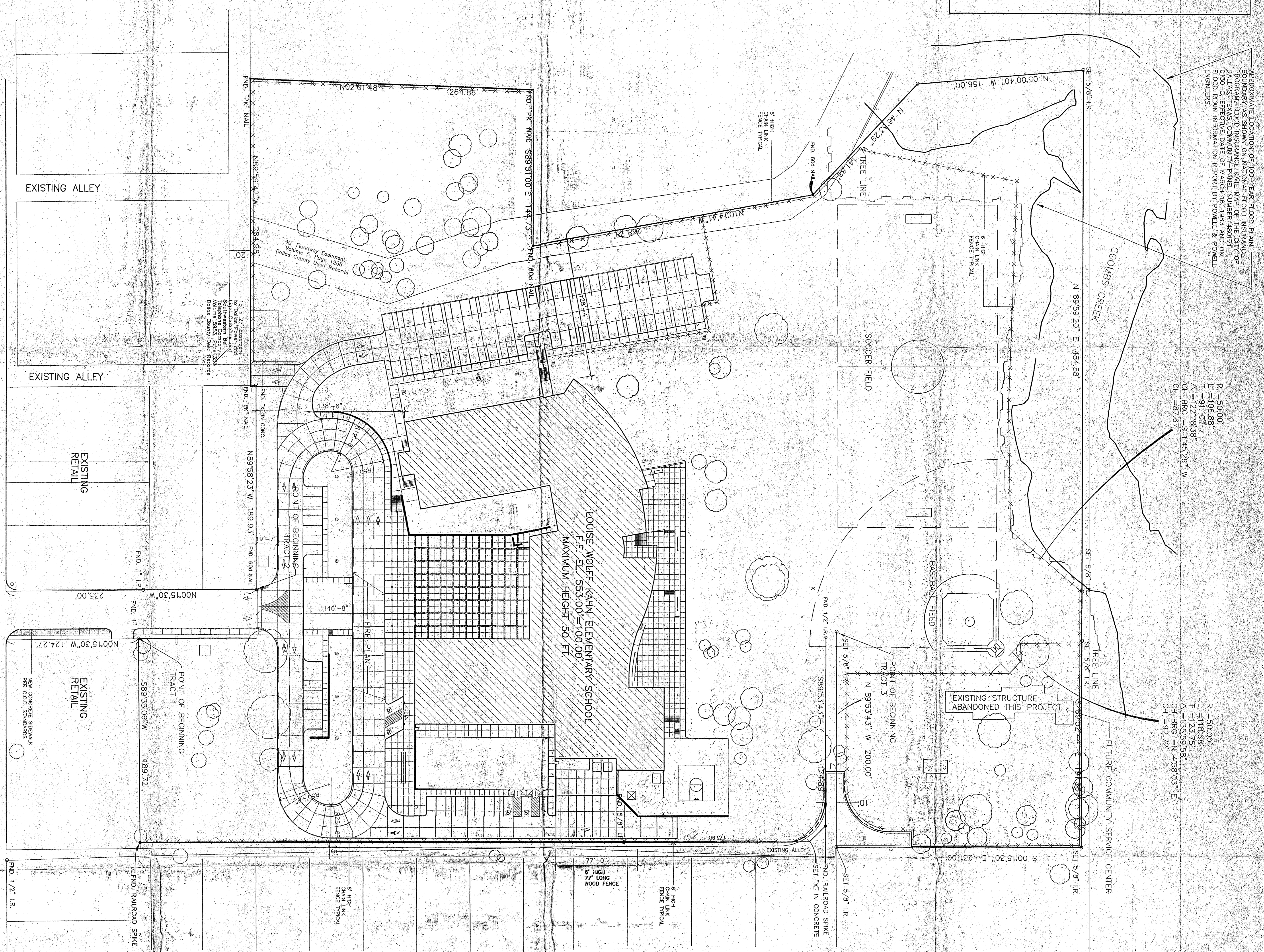


PROJECT DATA	
SITE AREA:	12 ACRES +/-
ZONING:	PO
PARKING TABULATION:	
TOTAL CLASSROOMS:	42
PARKING REQUIRED:	42 x 1.5 = 63 SPACES
HANDICAPPED PROVIDED:	8 SPACES
TOTAL PARKING PROVIDED:	90 SPACES
BUILDING CODE DATA	
OCCUPANCY:	
A. CONSTRUCTION TYPE -	II-N
B. AREA -	73,822 S.F.
C. SPRINKLERED:	
D. ALLOWABLE AREA -	UNLIMITED

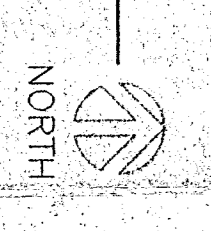


APPROXIMATE LOCATION OF 100-YEAR FLOOD PLAIN FROM DALLAS COUNTY INSURANCE RATE MAP, NUMBER 480772. FLOOD PLAIN INFORMATION REPORT BY POWELL & POWELL ENGINEERS.

R = 500.00'
 T = 91.10'
 A = 12278.33'
 CH BRG = S 145.28' W

R = 500.00'
 T = 123.75'
 A = 13529.38'
 CH BRG = N 458.03' E

1 DEVELOPMENT PLAN



962574
 22820
 APPROVED BY CITY COUNCIL
 AUG 24 1996
 City Secretary

Approved City Plan Commission
 6-4-96
 PLANNED DEVELOPMENT DISTRICT NO. 450
 Z956-210/0059-5W(DW)

Z 956-210

COPYRIGHT ©	1996 GarzaBRW ARCHITECTS
DATE	MAY 23, 1996
DRAWN BY	JCR,RCMB
CHECKED BY	CSR, JQL
PROJECT NO.	9561.00

LOUISE WOLFF-KAHN ELEMENTARY SCHOOL
 DALLAS, TEXAS
 DALLAS PUBLIC SCHOOLS

GARZA BRW
 ARCHITECTS
 1535 TRAVIS STREET
 SUITE 250, LB 302
 DALLAS, TEXAS 75204
 214.528.9022

KEYNOTES